



## PANDA SCANNER

 [www.panda-scanner.com](http://www.panda-scanner.com)  
 [info@panda-scanner.com](mailto:info@panda-scanner.com)

**Chengdu (R&D Center)** : 5th Floor, Building 6, Zhaoxin International, 86 Wuxing Road, Wuhou District, Chengdu City, Sichuan Province, China  
Tel : +86 28 8531 2603

**Ziyang (Manufacturing)** : Floor 2-3, unit 7, Building 3, No. 222, West Section 3, Outer Ring Road, Yanjiang District, Ziyang City, Sichuan Province, China  
Tel : +86 28 2657 7388

**Suzhou (Overseas Sales)** : Room 812, Building 3, Tiandu Tower, No. 211 Changjiang Road, High-tech Zone, Suzhou City, Jiangsu Province, China  
Tel : +86 512 6731 7873

**Ningbo (Headquarter)** : Room 807, Building A, Science and Technology Information Incubation Park, No. 655, Xueshi Road, Yinzhou District, Ningbo City, Zhejiang Province, China  
Tel : +86 574 2882 8655

**Brazil** : 138 João Alves Albuquerque -Parque Manibura - Fortaleza -CE- Brazil  
Tel : +55 85 98148 3241

# PANDA

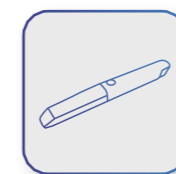
## smart

Small but Great



**Panda**   
**Scanner**

# FEATURES



## Smaller and Lighter

Only 138g  
221x27x25mm



## Faster and More Accurate

1 min ultra-fast scan  
7  $\mu$ m ultra-high accuracy



## Plug and Play

No power adapter needed



## New Designed Tip

White  Silver

50-100 autoclaving cycles  
More ergonomic

# Rainbow Colors

The art of intraoral scanners

-  Yellow
-  Silver
-  Purple
-  Blue
-  Red
-  White







**Super Quiet**  
Turbo Fan Cooling



**More Advanced**  
Self-developed Projector Module and Core Processor



**Much Durable**  
High-strength Aviation Aluminum Alloy



**High Imaging**  
SCHOTT ED Optical Glass Lens

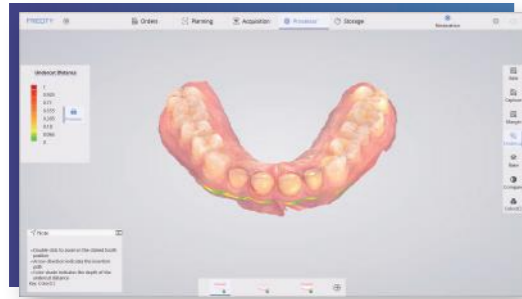
**Ergonomic**  
**Efficient**  
**Innovative**



**PAINFREE**  
**smart**

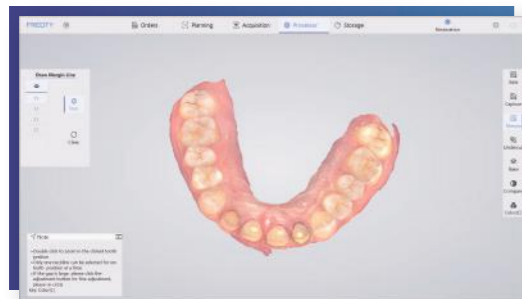


# SOFTWARE FEATURES



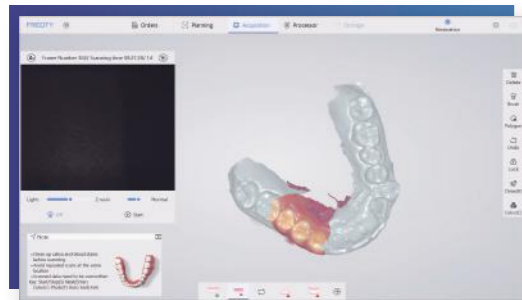
## Undercut Check

Auxiliary confirmation in place, colour gradient indicates undercut, accurate prediction, and improves the communication efficiency between doctors and technicians.



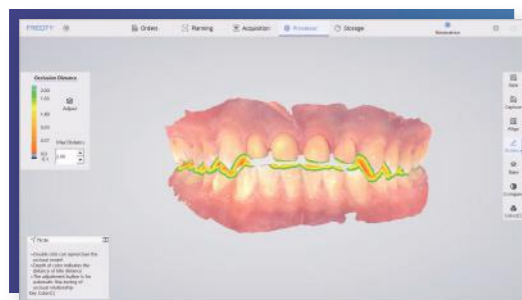
## Margin Line Drawing

Draw accurate and clear margin lines, linking doctors and technicians to reduce rework.



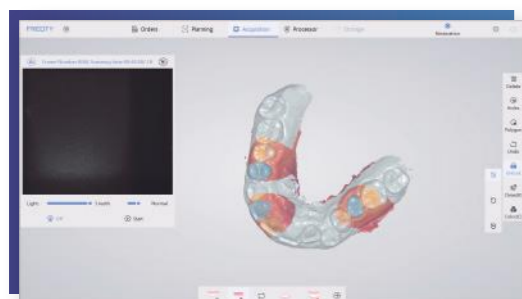
## Pre-preparation Scan

Obtain pre-preparation tooth state, retain bite data, and reshape the original good teeth.



## Bite Check

Color gradient indicates distance, accurately judges the restoration distance and assists in improving the effect of tooth preparation.



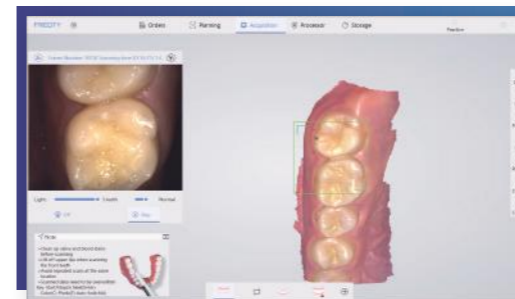
## Lock Data

Locks the tooth position to prevent data loss and reject excess data interference.



## Color Switch

True color jaws, clearly restore details, one click to switch colors, and check model data comprehensively.



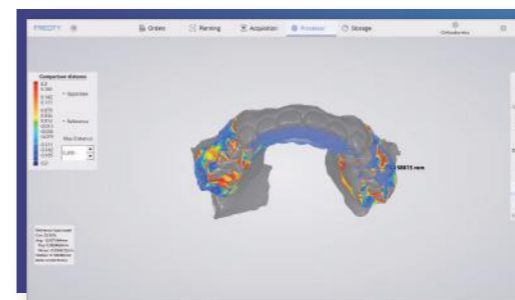
## AI Intelligent Scan

Easily identify soft and hard tissues, eliminate redundant data, and make accurate dental models.



## Orthodontic Simulation

Generate simulation animations to help doctors and patients communicate, share quickly, and promote orders.



## Disease Course Monitoring

Full-cycle diagnosis and treatment monitoring, comparative observation of model differences, simultaneous analysis, comprehensive upgrade of diagnosis and research.



## Cuff Tool

Clear cuff data, avoid tissue interference and lock automatically, significantly improving data reliability.

# APPLICATIONS

## Implant



Data Acquisition



CAD - Implant Surgery Planning



3D Guide Printing



Dental Implant



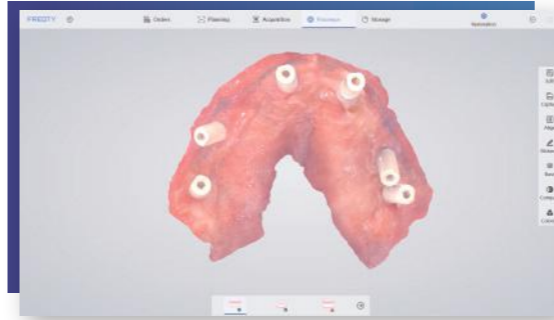
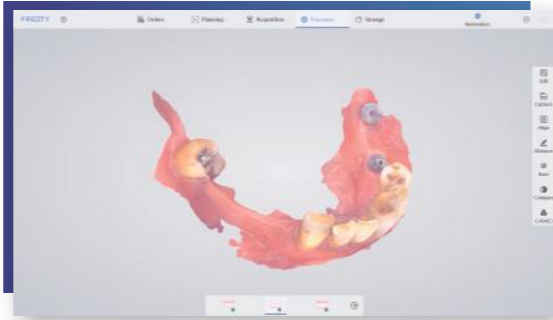
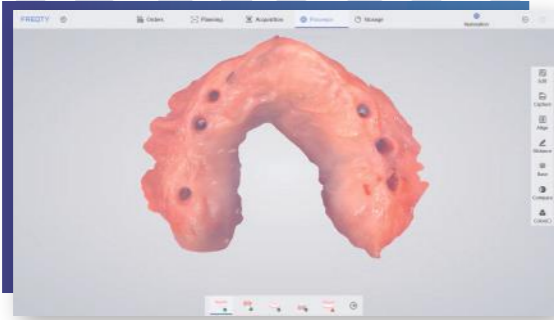
Secondary Data Acquisition



Make Dental Crowns



Wear Dental Crowns



## Restoration



Data Acquisition



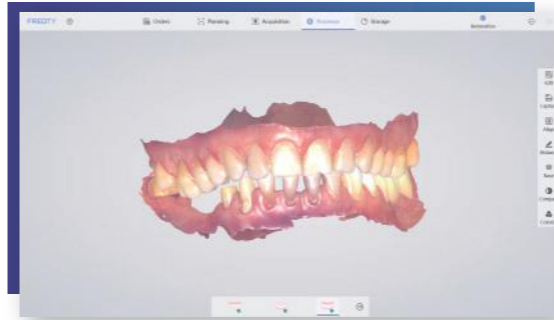
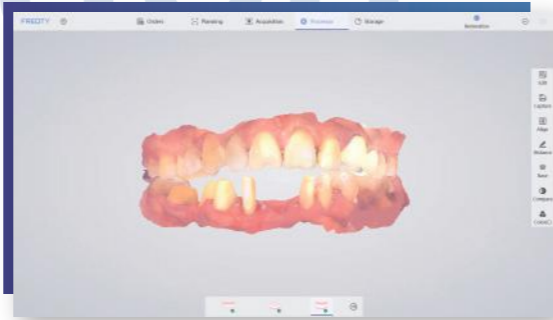
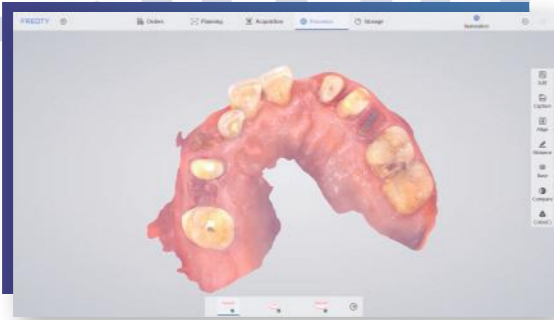
CAD - Restoration Design



CAM - Crown Milling - Wear Crowns



Wear Dentures



## Orthodontics



Data Acquisition



CAD - Orthodontic Plan



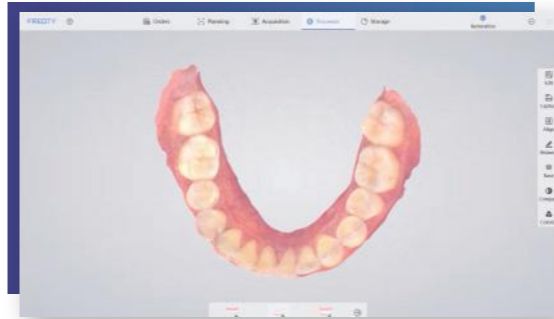
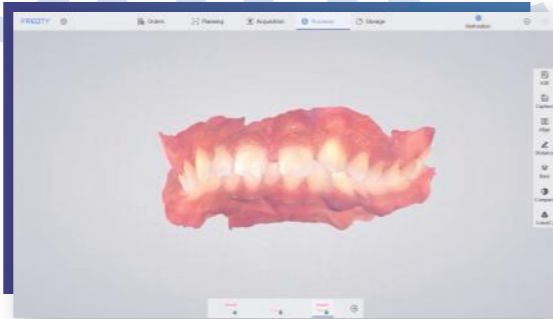
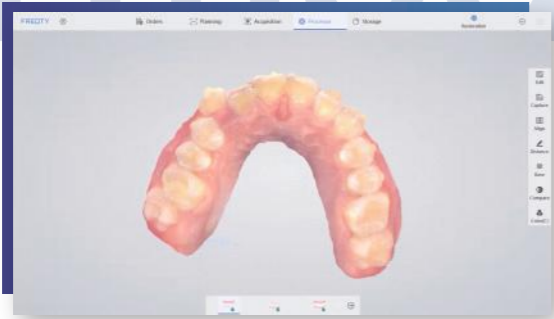
3D Model Printing



Make Aligners



Wear Aligners

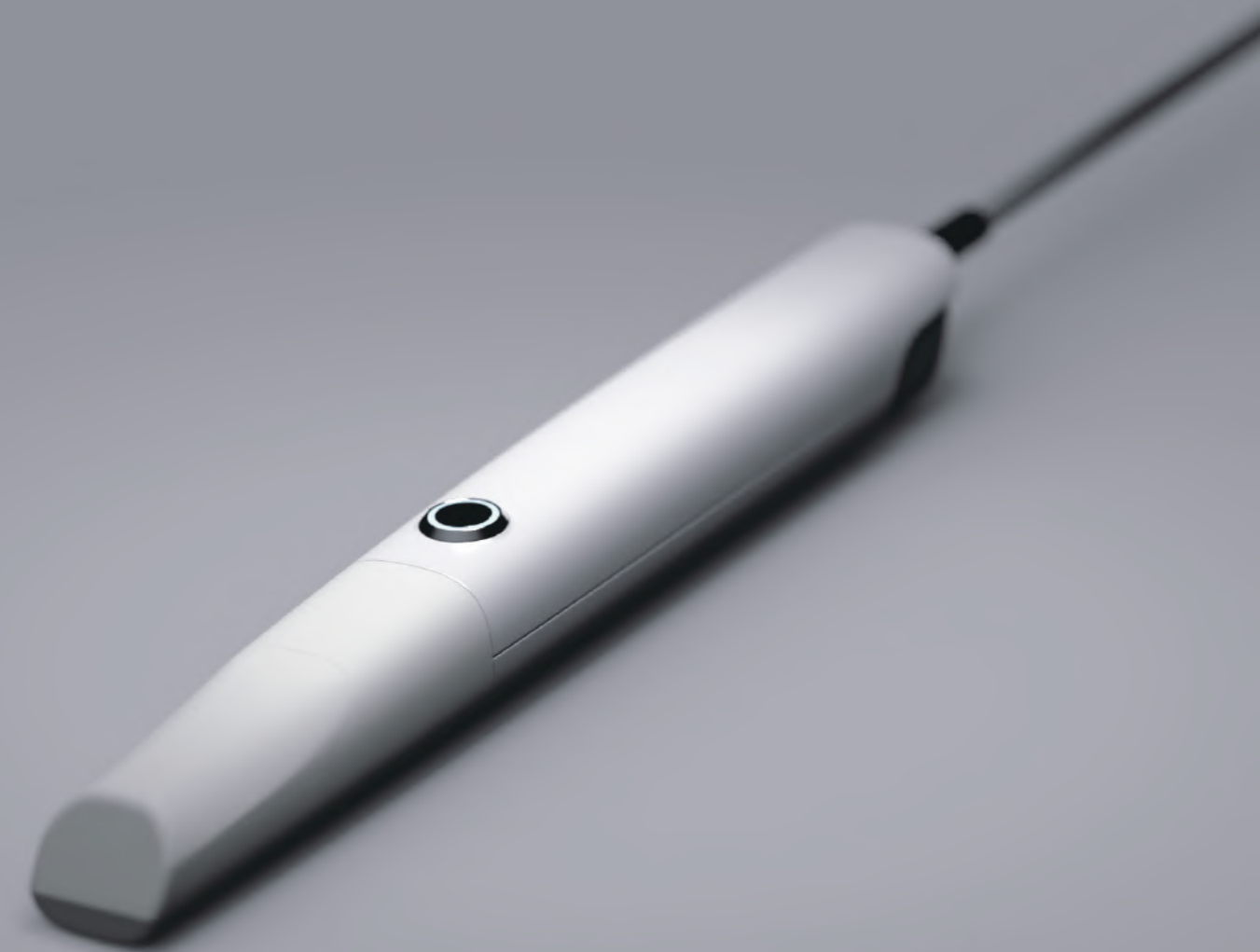




# SPECIFICATIONS

## PRODUCT INFORMATION

| Category            | PANDA smart                                 |
|---------------------|---|
| Technology          | Staring Scanning with Coded Structure Light |
| Anti Fog System     | Intelligent Heating                         |
| Accuracy            | ≤7μm  |
| Precision           | ≤5μm  |
| Handpiece Weight    | 138g (192g with cable)                      |
| Handpiece Dimension | 221x27x25mm                                 |
| Handpiece Enclosure | High-strength Aviation Aluminum Alloy       |
| Scan Field          | 18x16mm                                     |
| Scan Depth          | 0-20mm                                      |
| True Color          | Full HD                                     |
| Tips                | x6 (Autoclavable)                           |
| Tip Autoclave Cycle | 50-100 Times                                |
| Calibrator          | Automatic                                   |
| Scanning Control    | Button                                      |
| Motion Sensing      | Support                                     |
| Data Interface      | USB3.0                                      |
| Cable Length (m)    | 1.85m                                       |



# SOFTWARE

| Category                             | PANDA smart                               |
|--------------------------------------|---|
| Types of Scanning                    | Orthodontics, Implant, Restoration        |
| Image Store                          | Yes                                       |
| 3D Data Preview                      | Yes                                       |
| Output Files                         | STL, PLY, PTY (encrypted for user)        |
| Cloud Service                        | Yes                                       |
| Cloud Service Price                  | 5GB/free                                  |
| Direct Compatibility with Dental CAD | Exocad*                                   |
| Main Image Processing Tools          | Trim/Edit/Recover/Lock, etc.              |
| Margin Line Drawing                  | Yes                                       |
| Occlusal Match                       | Yes                                       |
| Undercut                             | Yes                                       |
| Data Comparison                      | Yes                                       |
| AI Technology                        | Auto Tissue Remove, Overlap Correct, etc. |
| Software License                     | Free                                      |
| Software Upgrade                     | Free                                      |
| Transfer Data with API               | Available                                 |

\*All names, logos, brands and other trademarks featured or referred to within this brochure are the property of their respective trademark holders.

# PC REQUIREMENTS

| Category                  | PANDA smart                     |
|---------------------------|---------------------------------|
| CPU                       | Intel i7-8700(3.2GHz) and above |
| Memory                    | DDR2400 16G and above           |
| Hard Disk                 | SSD 120G and above              |
| GPU                       | NVIDIA GTX1060 (6G) and above   |
| Computer Operating System | Windows10*64 bit and above      |
| Display                   | Resolution 1920×1080 and above  |

# AFTERSALES

| Category          | PANDA smart         |
|-------------------|---------------------|
| Standard Warranty | 1 year              |
| Extended Warranty | 2-3 years available |



# PANDA SCANNER ALL OVER THE WORLD



**80+** Countries with Panda Scanner in use

**40+** Patents

**10000+** Scanners in use

As a manufacturer of intraoral scanner in China, Panda Scanner is honored to be a member of the National Standard for Intraoral Digital Impression Instruments. Relying on strong technology research and development capabilities, Panda Scanner has established good cooperative relations with customers in Europe, Southeast Asia, Latin America, Australia, the Middle East and other regions.